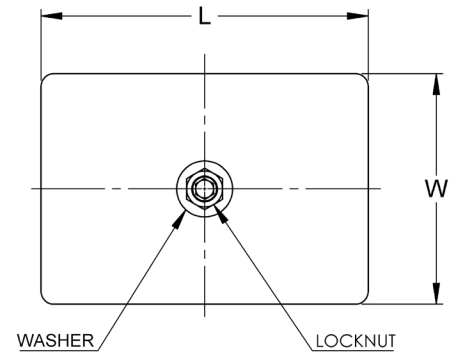
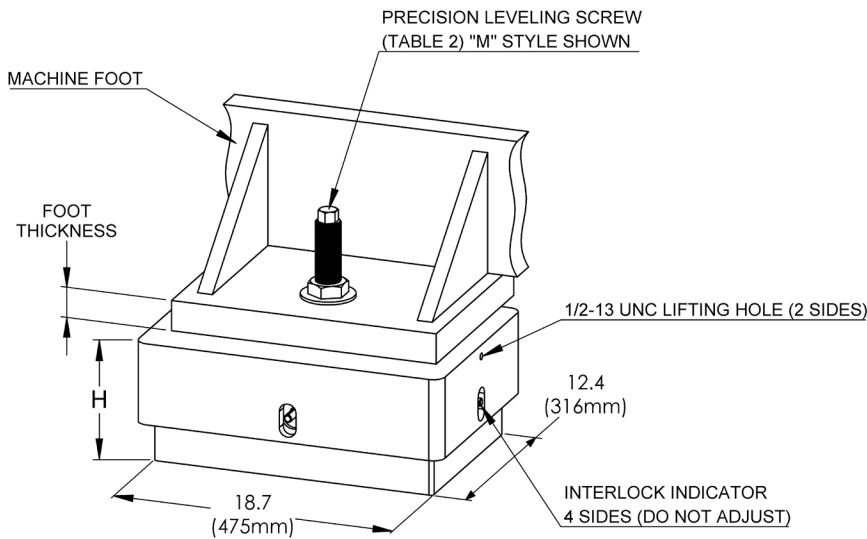




- Elastomer vibration & shock mount
 - protects environment against transmitted vibration & shock
 - protects sensitive equipment from incoming vibration & shock
 - faster, easier installations compared to grouting & anchoring
- Vertical leveling screw
 - secures mount to machine foot
 - provides precision leveling
 - compensates for sloping floor
- Proper machine support
- Proprietary elastomer cushions
 - oil and chemical resistant
 - multiple hardness & thickness for better isolation effectiveness
 - neoprene, nitrile standard compounds
- Meets OSHA anchoring requirements

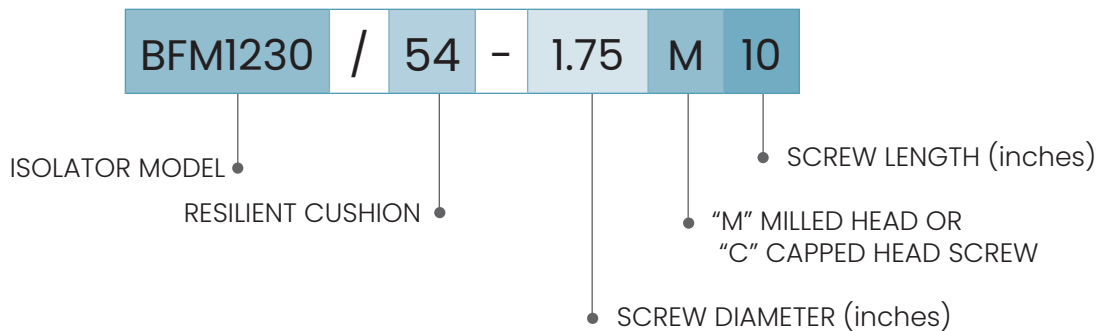


TYPICAL APPLICATIONS

- | | | | |
|---------------------------|----------------|---------------------|---------------------|
| • Presses, Mechanical | • Press brakes | • Swagers | • Cold Headers |
| • Forging Presses | • Shears | • Broaching | • Vertical Lathes |
| • Metal Container Presses | • Grinders | • Die Casters | • Machining Centers |
| • Turret Punch Presses | • Mills | • Injection Molders | • Generators |

Isolator		L		W		H ±1/8" (3mm)						Weight		Leveling Screw	Foot Thickness Up To:				Weight	
Series	Model	inch	mm	inch	mm	Minimum		Maximum		Installed		lbs	Kg		20 Series		25-26 series		lbs	Kg
						inch	mm	inch	mm	inch	mm				inch	mm	inch	mm		
20	BFM1230/34	20.5	521	14.5	368	7.00	177.8	8.00	203.2	7.50	190.5	337	153	1.5M7	1.8	46			4.4	2.0
	BFM1230/44	20.5	521	14.5	368	7.00	177.8	8.00	203.2	7.50	190.5	337	153	1.5M8	2.8	71			4.8	2.2
	BFM1230/54	20.5	521	14.5	368	7.00	177.8	8.00	203.2	7.50	190.5	337	153	1.5M10	4.8	122			5.8	2.6
	BFM1150/52	20.5	521	14.5	368	6.38	162.1	7.38	187.5	6.88	174.8	331	150	1.75M8	2.7	69			6.7	3.0
	BFM1150/57	20.5	521	14.5	368	6.38	162.1	7.38	187.5	6.88	174.8	331	150	1.75M10	4.7	119			8.0	3.6
	BFM1150/62	20.5	521	14.5	368	6.38	162.1	7.38	187.5	6.88	174.8	331	150	1.75M12	6.7	170			9.3	4.2
	BFM1340/60	20.5	521	14.5	368	6.00	152.4	7.00	177.8	6.50	165.1	326	148	2M8	2.6	66			9.1	4.1
	BFM1340/70	20.5	521	14.5	368	6.00	152.4	7.00	177.8	6.50	165.1	326	148	2M10	4.6	117			10.7	4.9
25	BFM2576	26.5	673	19.5	495	8.40	213.4	9.40	238.8	8.90	226.1	757	343	2M12	6.6	168			12.4	5.6
	BFM2590	26.5	673	19.5	495	8.40	213.4	9.40	238.8	8.90	226.1	757	343	2M14	8.5	216			14.1	6.4
	BFM25100	26.5	673	19.5	495	8.40	213.4	9.40	238.8	8.90	226.1	744	338	2.25M7	1.4	36	0.9	23	10.9	4.9
	BFM25110	26.5	673	19.5	495	7.90	200.7	8.90	226.1	8.40	213.4	744	338	2.25M8	2.4	61	1.9	48	11.9	5.4
	BFM25135	26.5	673	19.5	495	7.90	200.7	8.90	226.1	8.40	213.4	744	338	2.25M10	4.4	112	3.9	99	13.3	6.0
26	BFM2676	26.5	673	19.5	495	8.90	226.1	9.90	251.5	9.40	238.8	805	365	2.25M12	6.4	163	5.9	150	16.7	7.6
	BFM2690	26.5	673	19.5	495	8.90	226.1	9.90	251.5	9.40	238.8	805	365	2.25M14	8.5	216	7.9	201	20.1	9.1
	BFM26100	26.5	673	19.5	495	8.90	226.1	9.90	251.5	9.40	238.8	808	367	2.5M8	2.4	61	1.7	43	14.6	6.6
	BFM26110	26.5	673	19.5	495	8.40	213.4	9.40	238.8	8.90	226.1	802	364	2.5M10	4.2	107	3.7	94	17.0	7.7
	BFM26135	26.5	673	19.5	495	8.40	213.4	9.40	238.8	8.90	226.1	802	364	2.5M12	6.2	157	5.7	145	20.0	9.1
	BFM26180	26.5	673	19.5	495	8.40	213.4	9.40	238.8	8.90	226.1	806	366	2.5M14	8.2	208	7.7	196	23.0	10.4
														2.75M10	4.0	102	3.4	86	22.0	10.0
														2.75M12	6.0	152	5.4	137	25.0	11.3
														3M10			3.3	84	22.0	10.0
														3M12			5.3	135	25.0	11.3

Other Stock & Custom Lengths Available



NOTE: Isolator data subject to change without notice.

09/11/2024



Socitec US LLC
 2243 Braga, Drive, Broadview, IL 60155
 tel.: 800.842.7668 • vibro@vibrodynamics.com
 www.vibro-dynamics.com